

BEKARU LODGE



www.BEKARU.COM



P.O. Box 1553, Plettenberg Bay 6600
e-mail: info@bekaru.com
Tel: +27 (0)44 532 7829
Cell: +27 (0)72 239 9067
Amna Beleggings CC - CK 88/33632/23

Birds seen @ Bekaru Lodge



Jackal Buzzard *

Buteo rufofuscus L 45-53 cm

Ad. Has very dark plumage with bright chestnut breast and barred black and white belly. In flight vaguely resembles ad. Bateleur but the longer, rust-coloured tail and more flapping flight action eliminates confusion. Imm. Readily identifiable by rufous-coloured underparts, wing linings and pale, short tail.

Habitat: Generally confined to mountains ranges and adjacent grasslands. Common in suitable habitat in the south and central regions. Absent from the north where it is replaced by the Augur Buzzard.

Call: A loud, drawn-out "weeaah-ka-ka-ka", much like the yelp of the Blackbacked Jackal.

Afrikaans. Rooiborsjakkalsvoel



Bully Canary *

Serinus sulphuratus L 15 cm

The darker, southern birds can be distinguished from Yelloweyed and Yellow canaries by larger size, a chunkier bill and greenish wash across the breast. The paler, smaller northern birds differ from Yellow Canary by having a more massive bill and by lacking the contrasting yellow rump.

Habitat: Frequents a wide range of scrub, woodland and grasslands, but prefers coastal scrub. Common along the coast from the western Cape north to Mozambique, and into the Transvaal and Zimbabwe.

Call: Deeper pitched and slower than other canaries.

Afrikaans. Dikbekkanarie



Cape Cormorant

Phalacrocorax capensis L 65 cm

Intermediate in size between Bank and Crowned cormorants. Ad. has glossy blue-black plumage with a bright yellow-orange patch at base of bill. The patch brightens during the breeding season.

Imm. is dark brown with slightly paler underparts.

Habitat: A marine cormorant which rarely enters harbours. Long lines or "treks" of flying birds can be seen just off the western Cape coast. Mostly in the southern and western Cape, Namibia, and occasionally north to Natal and Mozambique.

Call: Silent except during the breeding season when various "gaaaa" and "geeee" noises are uttered.

Afrikaans. Trekduiker



Cape Crow

Dikkop

Redeyed Dove *

Streptopelia semitorquata L 35 cm

Much larger and darker than the similar Cape Turtle Dove. In flight, although both species have a grey band on the tip of the undertail, the Reyed can be distinguished by the lack of any white on the uppertail. At close range, the red eye and red skin around the eye, are diagnostic. It is much larger, and darker in colour than the Mouring dove

Habitat. Found in a range of areas from dry bushveld to coastal forests, and has adapted to city gardens and open parks. Common in the south, east and north of the region, being absent from the drier west. Call. Alarm call is a "chwaa". Other calls are variable but a very dove like "coo-coo, kook-co-ci" is typical.

Afrikaans: Grootringduif



Egret

Forktailed Drongo *

Dicurus adsimilis L 25 cm

In our region, the only all-black bird with a deeply forked tail. The Squaretailed Drongo is smaller and has only a slight notch in the tail.

Imm. has white scaling on the underparts and forewing and shows a yellow gape.

Habitat: Diverse Common throughout except in the central south-west.

Call: Mimicry and has "tchwaak Tchweek" noetes.

Afrikaans. Miksterbyvanger.



Yellowbilled Duck *

Anas undulata L 54 cm

The rich yellow bill with a black patch on the upper mandible is distinctive.

From a distance, appears dark but less so than African Black Duck. In flight it shows a blue-green speculum narrowly edged with white.

Habitat: Forms mixed flocks on virtually any area of open water. Common, occurs throughout most of the region.

Call: Female quacks. The male's call is a rasping hiss.

Afrikaans. Geelbekeend



African Fish Eagle

Haliaeetus vocifer L 63-73 cm

Apart from its haunting call, the ad. African Fish Eagle is unmistakable with its white head and breast, chestnut belly and forewings, black wings and white tail.

Imm. identifiable by general dark brown coloration with white blotches on head and throat, and diagnostic white tail with dark terminal band. Overall impression in flight is of a large, broad-winged eagle with a short tail.

Habitat: Aquatic: large rivers, lakes and dams. Coastal in some regions where it frequents estuaries and lagoons. Found throughout except in the extreme dry west.

Call: A gull-like yelping given in flight or at rest.

Afrikaans. Visarend

Longcrested Eagle *

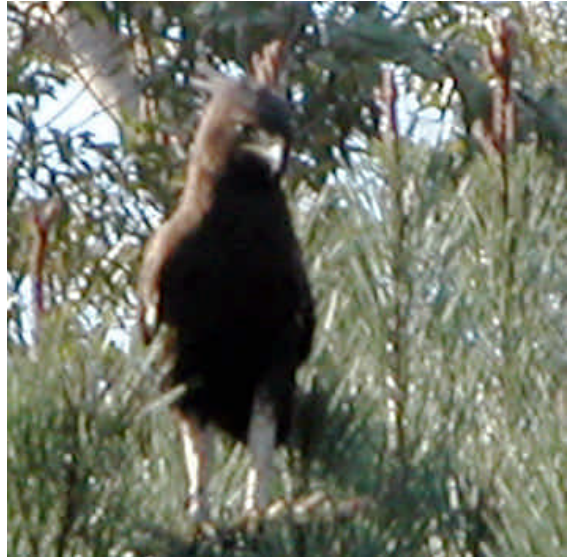
Lophaetus occipitalis L 52-58 cm

The combination of dull black plumage, white legs and long wispy crest ender this eagle unmistakable. In flight shows conspicuous white bases to primaries and secondaries, and a black and white barred tail. Flight action is fast and direct on stiffly held wings with shallow wing beats. Imm. Very like ad. But has short crest and grey, not yellow eyes.

Habitat: Well-wooded country and forest edges, especially where marshy. Common in suitable habitat in the east and north-east.

Call: High-pitched "keee-ah" given during display flight or when perched.

Afrikaans. Langkuifarend



Falcon

Egyptian Goose *

Alopochen aegyptiacus L 70 cm

A large, brown bird which has a dark brown mask over the eye, and a brown patch on the chest which is distinctive in flight. Compared with South African Shelduck it has a longer neck and legs, and a thin dark line running through the white forewings is visible in flight. Sexes alike.

Imm. lacks the brown mask and chest patch and the forewing is not pure white.

Habitat: Almost any freshwater habitat but frequently feeds in fields. Very common throughout.

Call: Female utters a grunting honk, the male hisses.

Afrikaans. Kolgans



Helmeted Guineafowl *

Numida meleagris L 56 cm

The grey body, flecked with white, the naked blue and red head, and bare casque on the crown, render this large game bird unmistakable. Imm. like ad. but has a less developed casque on crown, browner body coloration with white flecking enlarged on neck feathering.

Habitat: Grasslands, broad-leafed woodlands, thornveld and agricultural lands. A common, conspicuous bird found throughout the region except in the extreme dry west.

Call: A loud, repeated "krrdii-krrdii-krrdii-krrdii" and a "kek-kek-kek" alarm note.

Afrikaans. Gewone Tarentaal



Kelp Gull (Southern Blackbacked Gull)

Larus dominicanus L 60 cm

The largest gull of the region. Ad. differs from ad. Lesser Blackbacked Gull by having dark, not pale yellow eyes, and olive, not yellow legs. Sub-ad. birds are distinguished by being bigger and more robust than the Lesser Blackbacked, and by having brown, not pink legs.

Imm. resembles Subantarctic and South Polar skuas but lacks the white wing patches and has a barred rump.

Habitat: Forages along coasts, estuaries, inshore waters and may venture a few kilometres inland. Resident on all our coasts but is most common in the Cape.

Call: A loud "ki-ok" and a short, repeated "pok" alarm
Call:

Afrikaans. Swartrugmeeu



Blackheaded Heron *

Ardea melanocephala L 96 cm

Slightly smaller than Grey Heron. The black-topped head and hind neck contrast with white throat. In flight the white wing linings highlight the dark flight feathers.

Imm. has grey, not black on head.

Habitat: More often seen stalking through open grasslands than around water. Common throughout the region except in deserts.

Call: A loud "aaaaark", and various hoarse cackles and bill clapping at nets.

Afrikaans. Swartkopreier



African Hoopoe *

Upupa epops L 28 cm

Unmistakable with its long, decurved bill and long, black-tipped crest which is held erected when the bird is alarmed.

Its cinnamon-coloured body, and black and white barred wings and tail are conspicuous in flight.

Habitat: Thornveld, open broad-leaved woodland, parks and gardens. Common throughout the region except in the desert areas.

Call: A frequently uttered "hoop-hoop-hoop".

Afrikaans. Hoepoep



Redbilled Woodhoopoe *

Phoeniculus purpureus L 36 cm

Larger than the Scimitar-billed Woodhoopoe, this species has a long, decurved red bill, red legs and a long, white-tipped tail. Imm. Has a black billed but it is far less decurved than that of the Scimitar-billed. In good light, the bottle-green head and back of this species distinguish it from the violet Woodhoopoe.

Call: Harsh chattering and cackling calls, usually uttered by groups of birds.

Afrikaans. Gewone Kakelaar (Rooibekkekelaar)



Hadeda Ibis *

Bostrychia hagedash L 76 cm

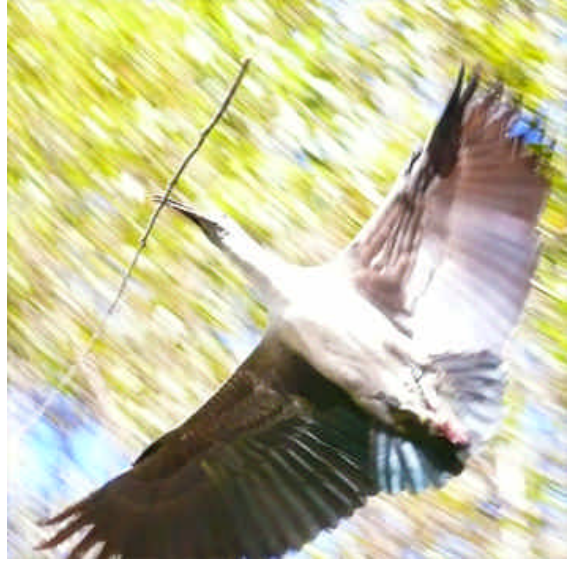
A drab, greyish brown bird which at close range shows glossy bronze wing coverts and back. The face is grey and a white stripe runs from the gill base to below and behind the eye. The long, dark, decurved bill has a red ridge on the upper mandible.

Imm. lacks the red on bill and the bronzing on back and wings.

Habitat: Breeds and roosts in woodlands, foraging in open glades and grasslands. Common in the eastern part of the region. Absent from the dry west. Move around in flocks numbering up to 20 birds or 100 out of breeding season.

Call: One of the most familiar calls in Africa. Birds flying to and from roosts utter a loud " *haa-haa-haa-dah-dah*".

Afrikaans. Hadededa



Sacred Ibis

Threskiornis aethiopicus L 90 cm

A white bird with an unfeathered black head and neck, and a long, decurved black bill. The scapular feathers are blue-black and flight feathers are black tipped, giving a narrow black edge to the wing. During the breeding season, the naked skin on the underwing turns bright scarlet.

Imm. differs from ad. by the western Cape. Found near fresh water, foraging in open areas. Common throughout the region except in more arid areas.

Call: Loud croaking at breeding colonies.

Afrikaans. Skoorsteenveër



Brownhooded Kingfisher *

Halcyon albiventris L 24 cm

This species can be distinguished from other similar red-billed kingfishers by its brownish head streaked with black, rusty patches on the sides of the breasts and well-streaked flanks. Differs from Striped Kingfisher by all-red, not black and red bill, and by the lack of a dark cap.

Habitat: Thornveld, open broad-leafed woodland and coastal forests. Often found far from Water. Has adapted to suburbia and is common in gardens and parks. Common in the north, east and south, being absent from the drier west.

Call: A whistled "kee-kee-kee-kee" and a harsher alarm note " kee-kee-kee".

Afrikaans. Bruinkopvisvanger



Knysna Lourie

Tauraco corythaix L 46

The all-green head, white eye-ring and white tips to the head crest distinguish the species from the Purplecrested Lourie. The race on the east coast, north of St. Lucia, has an elongated head crest. In flight shows conspicuous crimson patches on primaries.

Habitat: Dense evergreen forests. Common in the eastern, north-eastern and northern parts of the region.

Call: A loud, booming "kow-kow-kow-kow" and a quieter "krrr" alarm note.

Afrikaans. Knysnaloeerie

Blackheaded Oriole (Pirol) *

Oriolus larvatus L 24 cm

The black head is diagnostic in all plumages. It seems at long range might be confused with the rare Greenheaded Oriole but has a yellow, not green back. Imm, lacks coral red bill of ad. and its head is dark brown, flecked with green.

Habitat: Frequents a wide range of woodland and forest habitats and has adapted well to exotic plantations.

Call: A clear, liquid whistle "poodleeeoo" and a harsher "kweeer" note.

Afrikaans. Swartkopwielewaal



Spotted Eagle Owl *

Bubo africanus L 43-50 cm

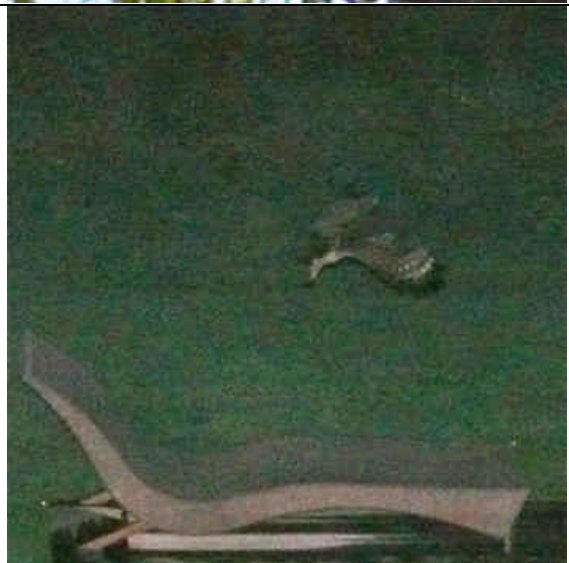
See also title picture by daylight

Grey and rufous colour phases occur. Grey phase is the most common and is distinguished from the Cape Eagle Owl by its smaller size, lack of dark brown breast patches, by its finely barred belly and flanks, by its yellow, not orange eyes, and its smaller feet. Although the rufous phase closely resembles the Cape Eagle Owl, it is separable on the above characteristics except that the eyes are similar orange.

Habitat: Frequents a wide range of habitats but avoids thick forest. The most common "eagle owl" of the region, it is found throughout.

Call: Call similar to that of Cape Eagle Owl but is shorter "huu-whoou".

Afrikaans. Gevlekte Ooruil



Rock Pigeon (Speckled Pigeon) *

Columba guinea L 33 cm

The reddish wing spotted with white, and the bare red patches around the eyes are diagnostic. The only similar pigeon in the region is the Rameron which is much larger, darker and has bright yellow bare eye patches.

Habitat: Mountains ranges, rocky terrain, coastal cliffs and cities. Common in suitable habitat but absent from the eastern and central areas.

Call: A deep, booming "hooo-hooo-hooo" and a softer "coocoo-coocoo".

Afrikaans. Kransduif



Crowned Plover

Crowned Plover

Robin

Fiscal Shrike * (Butcher Bird)

Lanius collaris L 23 cm

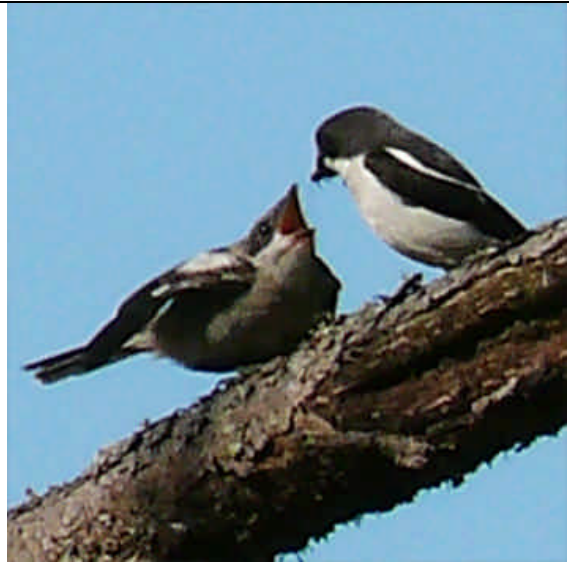
The similar Boubou Shrikes are shy, skulking birds whereas this species is one of the most familiar shrikes of the region, hunting from exposed perches along roadsides and in suburbia.

Ad. male is black above, white below with prominent white shoulder patches. Female shows a rust-coloured patch on the flanks. Imm. is greyish brown with grey crescentic barring below. Ad. differs from male Fiscal Flycatcher by lacking white sides to the tail and by having a hooked, not flattened bill.

Habitat: Found in virtually every habitat except dense forest. Common throughout except in the north-central and eastern regions.

Call: Harsh grating, a melodious whistles song jumbled with harsher notes, and mimicry of other bird calls. Call is recorded @ Bekaru Homepage.

Afrikaans Fiskaallaksman



Starling

Greater Doublecollared Sunbird *

Nectarinia afra L 14 cm

Far larger than the Lesser Doublecollared Sunbird, this species has a longer, heavier bill and a much broader red breast band. Females of both species are dark brown and olive but this one is greener below and has a longer, heavier bill.

Habitat: More mountainous terrain than Lesser Doublecollared Sunbird.
Common in the south, east and central regions.

Call: A harsh, frequently repeated "tchut-tchut-tchut" and a fast song.

Afrikaans. Groot-rooiborsuikerbekkie



Orangebreasted Sunbird

Nectarinia violacea L male 14 cm; female 12 cm

The only small sunbird in the region to have pointed tail projections. The males's dark head and throat, and orange-yellow belly and breast are diagnostic. The female is larger than the female Lesser Doublecollared Sunbird and is a more uniform olive green above and below.

Habitat: Fynbos, and flowering montane protea and aloe stands. Common endemic on the extreme southern Cape.

Call: A harsh, buzzy "tsee-aap" and a "teer-turp".

Afrikaans. Oranjeborssuikerbekkie



Swallow

Long tailed Wagtail *

Motacilla clara L 20 cm

Its unusually long tail, pale grey upperparts and white, not buff underparts distinguish the species from the Cape Wagtail. It also shows much more white in the wings and is altogether a far more slender bird.

Habitat: Confined to fast flowing streams in evergreen and coastal forests. Common but localise in scattered eastern region.

Call: A sharp, high-pitched "cheerip" or "chissik".

Afrikaans Bergkwikkie



Cape Wagtail *

Motacilla capensis L 18 cm

The unmarked, greyish brown upperparts, combined with the narrow black breast band, are diagnostic. Distinguished from the Longtailed Wagtail by having a shorter tail, buffy, not white belly and flanks, and by lacking extensive white in the wings.

Habitat: Usually near fresh water or coastal lagoons but has also adapted to city parks and gardens. Common throughout except in the north-east.

Call: A clear, ringing "tsee-cher-cher" call and a whistled, trilling song.

Afrikaans Gewone Kwikkie



Common Waxbill *

Estrilda astrild L 13 cm

This small, brownish, long-tailed finch is best distinguished by its red bill and face patch, and by the small reddish patch on the belly. Imm. lacks the red bill and face patch but does show the red belly patch.

Habitat. Long grass in damp areas, alongside rivers and in reedbeds. Common throughout the region except the dry central areas.

Call. A nasal "cher-cher-cher" and a "ping, ping" flight note.

Afrikaans. Rooibeksysie (Rooibekkie).



Weaver *



Yellow White-eye *

Zosterops senegalensis L 11 cm

The bright sulphur yellow underparts and very pale green, almost yellow upperparts distinguish this species from the Cape White-eye. The head of this species is almost completely yellow whereas that of the Cape White-eye is green. The imm. is a very much paler yellow and green than the imm. Cape White-eye.

Habitat. Found in a variety of woodlands, from thornveld to montana forests. Common in the north-east.

Call. Very similar in quality to that of the Cape White-eye but this species has a faster delivery.

Afrikaans. Geelglasogier



Ad. = adult

Imm. = immature

Habitat relates to the territory of South Africa

*pictures taken at Bekaru Lodge

Pictures are sorted by main name of birds.

All Pictures taken by Bernhard Rühm and Dean Krimchanski and have a Copyright©

Boxes without pictures: Birds have been seen and brochure will be completed after pictures are available.

Comments based on the book "Field Guide to The Birds of Southern Africa" from Ian Sinclair - Version May 1984.

Copyright for text remains with Ian Sinclair.

This overview is only for Guest information and not for commercial distribution.